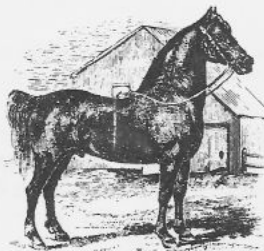


American Morgan Horse Register

REGISTRATION CERTIFICATE



THE MORGAN HORSE
The pride and product of America
This Certifies that the Morgan MARE

NAMED WINDFIELD EVE

No. 0174611 FOALED April 06, 2007
"Qualified by DNA Testing"

COLOR BAY

MARKED: BROWN EYES. LEFT HIND PARTIAL PASTERON ON INSIDE WITH
DISTAL SPOTS. MEDIAN COWLICK BELOW EYE LEVEL.

BRED BY Lee's Riding Stable Inc, Litchfield CT

ROSEWIND STARGAZER 163609
BLK QDNA

CADUCEUS JOSHUA 116749
BLK DNA QBT

INTRIGUE 0134936
BLK DNA QBT

RED ROSE JOE 140543
PALO DNA QBT

LAKOTA MOONSHOT 0159793
PALO QDNA

PAULETTE DAKOTA 0136470
CHNT DNA QBT

WYOMING FLYHAWK 24795
BLK BT

MJVM SERENA 083212
BLK DNA SBT

UVM ALLIANCE 128200
BAY DNA QBT

SWANBROOK CHINA DOLL 0109796
BAY DNA QBT

TRIPLE S BALD EAGLE 125875
PALO DNA QBT

MRM MISS IMPERIAL 072822
BAY SBT

FREDS THUNDER 92649
CHNT DNA SBT

TOTEM PEAKS DOLLY 085659
CHNT DNA QBT

DOMINO JOE 16417
BLK BT
LILY BLACK 09320
BLK
SERENDIPITY ARIES B 26201
BAY BT
AFRICAN VIOLET 013940
BLK
UVM TENNYSON 112038
BAY DNA QBT
UVM ENVY 030234
CHNT SBT
WORTHINGTON COURANTE 81680
BAY BT
WINDON ELECTRA 091458
CHNT SBT
TRIPLE S GOLD EAGLE 106844
PALO DNA SBT
TRIPLE S RED CARMEN 022397
CHNT SBT
TROUTBROOK IMPERIAL 28266
BAY BT
SUNFLOWER MISS 027804
BAY BT
PANTHER ETHAN WALKER 73571
CHNT BT
BOBETTE'S FANCY 022581
CHNT
FUNQUEST HOK 15472
CHNT BT
PAULETTE ROCKWOOD 026058
CHNT



Current
Record Owner

595181
Lee's Riding Stable Inc
Windfield Morgan Farm
Lee Lyons
57 E Litchfield Rd
Litchfield, CT 06759-2800

is registered in the American Morgan Horse Register

Given this 21 day of August 2007

THE AMERICAN MORGAN HORSE ASSOCIATION, INC.®

REGISTRAR